



Public Health  
England

# A new infection has been detected in Wuhan, China

(Novel Coronavirus)

If you have been to Wuhan, China, in the last 14 days and develop **ANY** of these symptoms, contact a healthcare professional

**Any of ....**



**Runny  
nose**



**Cough**



**Sore  
throat**



**Fever**



**Difficulty  
breathing**

If you develop symptoms within 14 days of leaving China, contact a healthcare professional for free advice and treatment, by calling NHS 111 or your GP, and tell them that you have travelled to Wuhan.



Public Health  
England

# 一种新型感染在中国 武汉被发现

(新型冠状病毒)

如果您在过去14天内去过中国武汉，并且出现上述  
任何症状之一，请与医疗保健专业人员联系。

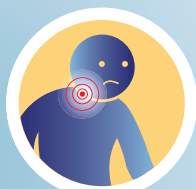
任何之一...



流鼻水



咳嗽



喉咙疼



发烧



呼吸困难

如果您在离开中国后的14天内出现症状，请致电NHS111或您的全科医生，与医疗保健专业人员联系以获取免费建议和治疗，并告诉他们您曾去过武汉。